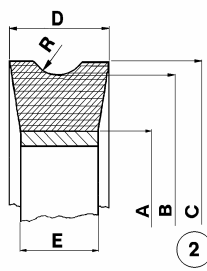
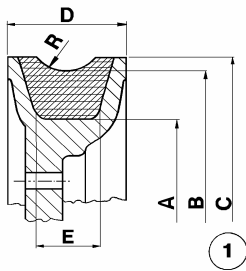
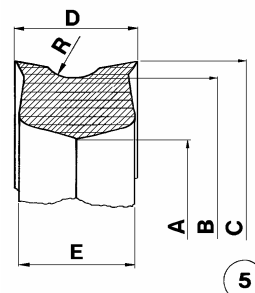
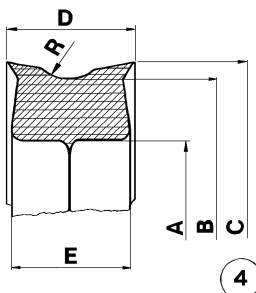
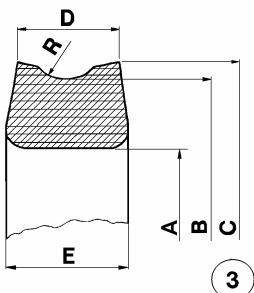


ANELLI ANCORATI AL METALLO



A	B	C	D	E	R	REF.	A	B	C	D	E	R	REF.	A	B	C	D	E	R	REF.
158	200	220	54	-	21	2610	93	115	125	26	24	12	3469	240	290	308	39	35	11	3623
180	210	240	55	-	18	4690	62	130	140	60	60	24	4587	264	300	308	25	25	10	4726
172	220	245	64	-	20	2619	113	145	161	42	40	7	4260	230	320	348	84	80	44	3492
208	250	270	53	30	21	3743	130	164	170	32	25	28	3283	324	375	385	40	43	-	2612
200	250	295	88	-	20	4027	130	180	195	44	30	27	4030	335	390	415	44	40	14	3349
240	300	330	72	42	30	3633-A	152	190	207	30	26	8	4309	360	409	417	45	40	-	4532
240	300	332	77	-	30	2618	204	250	255	34	30	-	4246	485	550	560	45	40	14	2609
240	300	320	78	49	30	3633-B	200	250	270	55	40	22	2617	514	600	610	43	43	22	2616
290	350	380	72	-	28	4521-B														
278	350	380	85	-	36	4521-C														
280	355	380	85	-	34	2050														
290	356	386	72	42	28	4521-A														
366	450	480	104	70	42	4500-A														
378	456	486	85	51	36	4500-B														

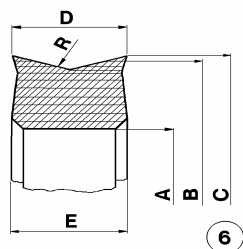
ANELLI IN GOMMA CHIUSI



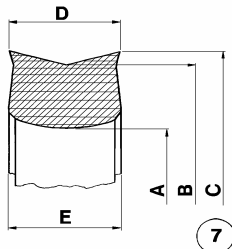
A	*a	B	C	D	E	R	REF.	A	*a	B	C	D	E	R	REF.	A	*a	B	C	D	E	R	REF.
168	160	210	216	37	40	8	4657	240	237	280	300	45	51	11	4669	200	194	260	270	42	45	15	4663
170	167	220	235	40	42	9	4699	270	266	314	330	50	50	12	4247-A	250	232	320	335	50	56	12	4654
202	196	240	250	35	38	8	4658	270	266	314	330	50	50	14	4247-B	294	288	360	380	66	60	18	4114
231	224	275	287	46	50	10	4659	271	262	318	335	58	50	15	4631								
210	202	280	294	50	55	11	4123	271	264	318	335	58	50	15	4163-A								
230	225	280	292	52	59	11	4177	271	264	320	335	58	50	9	4163-B								
265	260	317	325	44	49	16	4259	282	272	342	358	70	63	-	4759								
258	255	320	340	60	62	9	4700	316	302	360	377	57	62	17	4565								
260	254	320	335	60	70	16	4671	309	303	360	380	65	55	18	4745								
267	257	320	333	50	55	13	4666	355	345	418	442	88	75	-	4688								
250	242	320	335	62	65	18	4652	355	344	420	444	72	55	24	4689								
283	273	340	345	60	65	22	4590																
283	273	350	355	60	65	-	4661-B																
300	295	360	380	68	76	18	4252																
300	295	360	380	73	81	18	4668																
303	286	360	380	66	74	22	4662																
293	287	360	386	68	70	15	4691																

* quota 'a' : anello libero non montato

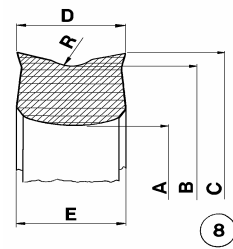
ANELLI IN GOMMA 'APERTI'



6



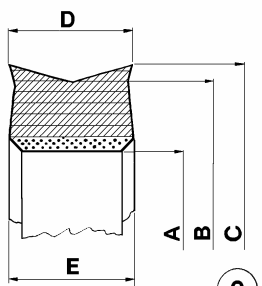
7



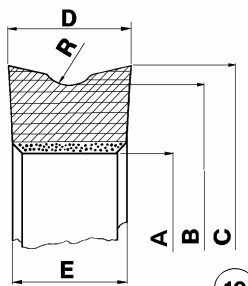
8

A	B	C	D	E	R	REF.	A	B	C	D	E	R	REF.	A	B	C	D	E	R	REF.
224	280	292	50	52	11	4441	290	360	380	74	74		4640	210	280	294	50	50	10	4639
260	320	336	60	62	-	4404-A	370	450	470	86	89		4637	290	360	380	70	71	18	4591
260	320	336	60	62	15	4404-B	375	460	477	71	75		2681	290	360	380	74	74	15	4600
260	330	336	56	56	-	4660	375	460	478	81	85		2682-A	375	460	478	81	85	26	2682-B
300	360	380	66	68	15	4405	400	500	520	90	95		2683-A	400	500	520	90	95	26	2683-B
300	360	376	68	70	-	4747														
330	405	430	67	75	-	4682														
376	450	464	68	70	-	4343-A														
376	450	464	68	70	22	4343-B														
376	450	466	90	92	-	4567														
376	458	472	68	72	-	4343-B														
522	600	611	68	71	-	4479														

ANELLI CON TALLONE TESSILE CHIUSI

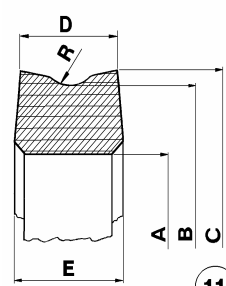


9



10

ANELLI IN GOMMA CHIUSI



11

A	*a	B	C	D	E	R	REF.	A	*a	B	C	D	E	R	REF.	A	*a	B	C	D	E	R	REF.
300	292	360	380	66	66		4626-A	200	195	250	255	40	40	10	4693	120	114	150	170	26	26	8	3808
315	304	380	393	65	65		4611-A	200	193	260	275	48	48	12	4723	100	95	150	160	38	38	11	4002
330	318	400	414	76	76		4610-C	230	222	280	290	50	50	11	4665	155	149	202	212	35	35	5	4758
333	323	400	418	80	80		4615	260	253	320	336	60	60	15	4692	158	150	202	208	25	25	9	4053
330	318	400	414	85	85		4610-A	290	284	350	370	64	45	28	4625	200	194	245	260	45	42	10	4628
380	368	440	460	65	65		4629	288	276	360	375	61	61	30	4601	195	190	250	270	59	45	25	4606
370	357	450	466	86	86		4592-A	300	288	360	380	66	66	18	4626-B	210	205	250	274	50	50	-	4749
370	361	450	470	95	91		4582	315	304	380	393	65	65	19	4611-B	210	200	260	270	31	35	18	4741
400	387	500	517	90	90		4686-A	330	318	400	414	76	76	#25	4610-B	216	261	273	45	45	20	4269	
410	397	500	520	86	86		4760-A	330	318	400	414	85	85	19	4610-D	189	265	272	38	38	9	4743	
								330	318	400	414	85	85	22	4610-E	227	275	283	44	45	10	3613	
								355	347	420	430	56	56	15	4608	267	300	315	40	50	12	4566	
								400	390	450	470	49	53	10	4730	262	250	312	324	50	50	13	3829
								370	357	450	466	86	86	22	4592-B	285	275	350	375	67	75	27	4340
								380	367	460	476	75	75	22	4761	290	282	350	360	55	51	18	4653
								400	387	500	517	90	90	20	4686-B	336	395	404	44	46	18	3825	
								410	397	500	520	86	86	28	4760-B	355	400	412	42	44	15	3756	
																325	400	404	50	53	15	3622	
																360	352	430	450	55	58	14	4656
																446	436	500	510	42	45	11	4655
																490	475	546	565	50	60	18	4636-B
																490	475	550	565	50	60	18	4636-A

* quota 'a': anello libero non montato

: raggio disassato, non in mezzeria



ISOPREN S.R.L.

CUSANO MILANINO MI

tel. 02/6193626
fax.02/6133345

RULLIERE GUIDA-FUNE
IMPIANTI DI RISALITA

ex 3/02 2/2
10/05