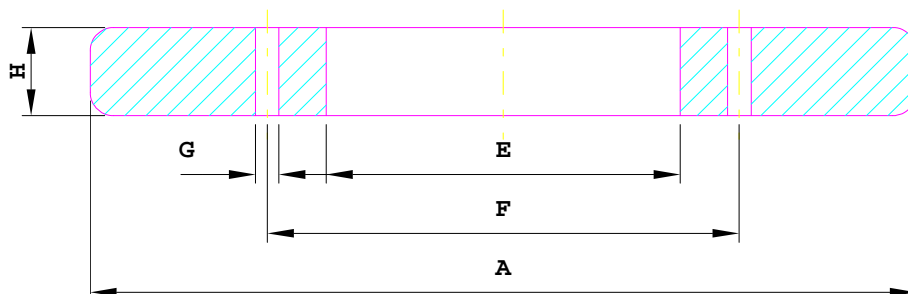


GUARNIZIONI PER PIG BIDIREZIONALI



DN	A	E	H	FORATURA			ATE
				F	G	N°FORI	
GOMMA							
12"	330	162	25	202	16	8	4751
400 (16"SP)	407	215	30	285	10 (*)	8	4774
16"	415	225	30	258	14	8	4738
18"	465	275	30	323	18	8	4770
20"	520	275	35	324	14	8	4736
24"	620	330	35	424	14	8	4719
26"	665	360	35	464	18 (*)	8	4768
28"	715	410	40	500	18	8	4742
30"	760	410	40	510	18	8	4647
32"	830	465	45	530	22	12	4728
36"	926	566	45	662	22	12	4694
40"	1020	665	55	760	22 (*)	12	4765
42"	1070	646	64	765	12	32	E 2316
48"	1209	665	65	911	12	32	4642
48"	1216	800	70	910	14	32	4436
POLIURETANO							
24"	600	330	35	438	22	12	EA 2179
28"	710	360	35	464	18	8	A 0117
48"	1190	665	45	950	22	16	EA 2104

(*) MISURA DEL FORO OTTENUTA SENZA IL MONTAGGIO DELLE BUSSOLE METALLICHE.