

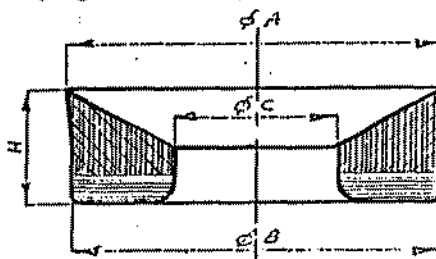
ISOPREN

ISOPREN

GUARNIZIONI PER PISTONI TIPO "MISSION"

(replacement pistons rubber) type

dis. P.23-9/2



GUARNIZIONI PER PISTONI PER CONICITA' 4 - 5 API
(replacement pistons rubber for API 4 - 5 taper)
diametro interno 3" (hub diameter 3")

misura in " size inches	A	B	C	H	n° matr. code nr.	Alt. Int. L.
4.1/2"	116	113	76	40	399	} 30
5"	129	126	76	40	61	
5.1/4"	135,5	132,5	76	40		
5.1/2"	142	139	76	45	3138	
5.3/4"	148	145	76	45	3032	
6"	154,5	151,5	76	45	451	
6.1/4"	160,5	157,5	76	45	127	
6.1/2"	167	164	76	53	426	
6.3/4"	173,5	170,5	76	53	452	
7"	180	177	76	53	65	
7.1/4"	186	183	76	53	453	
7.1/2"	191,5	189,5	76	57	380	
7.3/4"	199,5	196,5	76	57	3164	

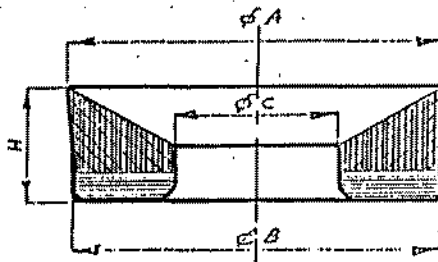
GUARNIZIONI PER PISTONI PER CONICITA' 6 API
(replacement pistons rubber for API 6 taper)
dis. P.23-13/0
diametro interno 3.1/2" (hub diameter 3.1/2")

misura in " size inches	A	B	C	H	n° matr. code nr.	L.
5.3/4"	148	145,5	95	46	3081	} 34
6"	154,5	152	95	48	3082	
6.1/4"	160,5	158	95	49	3083	
6.3/4"	173	171	95	51,5	3084	
7"	180	177,5	95	53	3085	
7.1/4"	186	183,5	95	54	3086	
7.1/2"	192	190	95	55	3087	
7.3/4"	198,5	196	95	56	3088	
8"	205	202,5	95	57	3089	

ISOPREN

GUARNIZIONI PER PISTONI TIPO "ARROWHEAD"
(replacement pistons rubber) type

dis. P.23-24/2



GUARNIZIONI PER PISTONI PER CONICITA' 4 - 5 API
(replacement pistons rubber for API 4 - 5 taper)
diametro interno 3" (hub diameter 3")

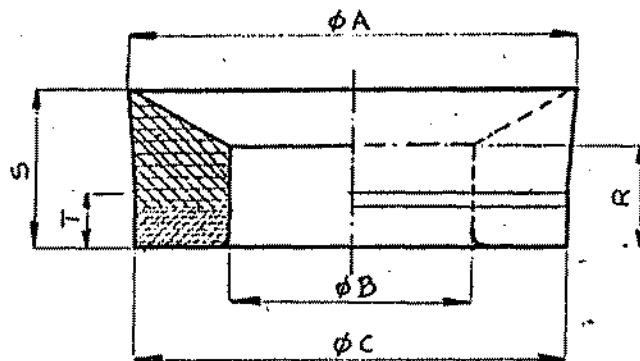
misura in " size inches	A	B	C	H	n° matr. code nr.	Alt. Int. L.
5.3/4"	148	145	76	48	3510	} 32
6.1/4"	162,5	157,5	76	51	3511	
6.3/4"	173,5	170,5	76	54	3776	

GUARNIZIONI PER PISTONI PER CONICITA' 6 API
(replacement pistons rubber for API 6 taper)
diametro interno 3.1/2" (hub diameter 3.1/2" dis. P.23-25/3)

misura in " size inches	A	B	C	H	n° matr. code nr.	L.
5.3/4"	148	145,5	95	48	3583	} 36
6"	154,5	152	95	49,5	3505	
6.1/4"	160,5	158	95	51	3165	
6.1/2"	168,5	164,5	95	52,5	3506	
6.3/4"	173	171	95	54	3162	
7"	181,5	177,5	95	55,5	3507	
7.1/4"	186	183,5	95	57	3374	
7.1/2"	192	190	95	58	3508	

ISOPREN

(sundry replacement pistons rubber)



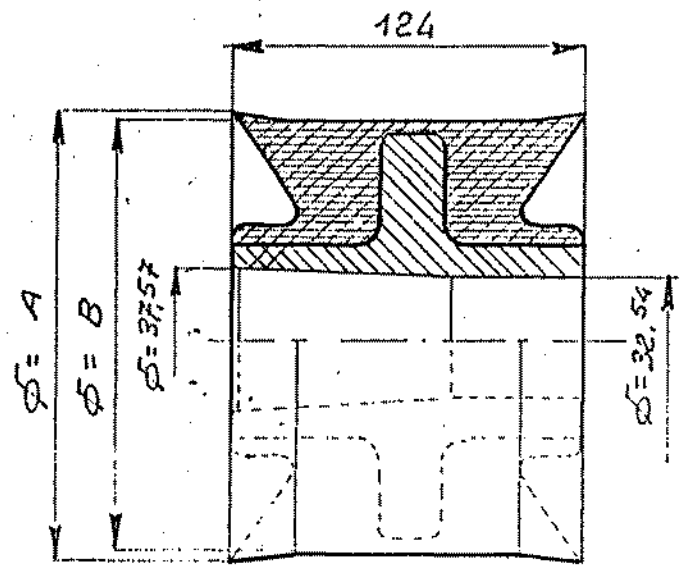
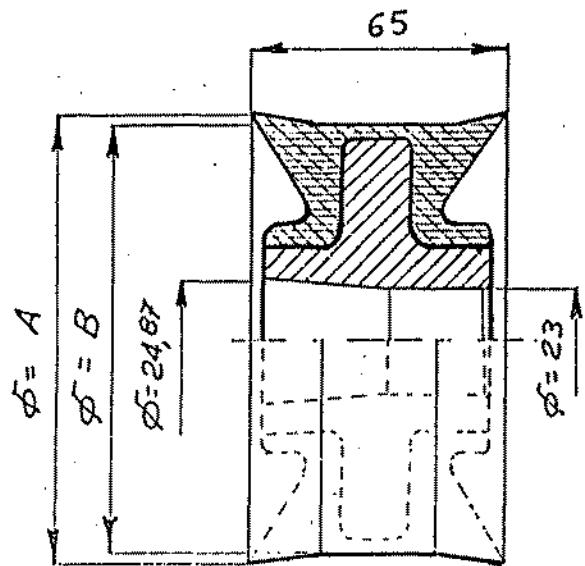
misura in " size inches	A	B	C	R	S	T	matr. n° code nr.
5"	127	52	125	20	40	20	3411/1
4.1/2"	117	50,8	112,6	15	28		3443/1
5"	132	75,6	129	30	40	11,5	3478/1
2.1/2"	66	35	62	7	24,5	8	3542/1
4"	103	51	100	12	26	6	3569/1
4.1/2"	116	51	113	11	30	7	3570/1
3"	75,6	40,4	74,4	14	20	10	3598/1
5"	131	61,2	126,6	30	50	15	4021/1

ISOPREN

PISTONI CON INSERTO METALLICO
(Pistons with metallic insert)

Conicità 1 API

Conicità 3 API

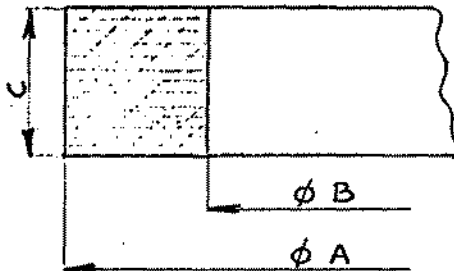


API	diametri standard	A	B	matr.
1	3.1/2"	91,5	87,5	3911
1	4"	104	100	3791
1	5"	129,5	125,5	3676
3	4"	104	100	3795
3	5"	129,5	125,5	4061

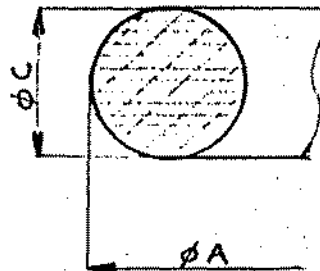
ISOPREN

GUARNIZIONI " FLUID END "
(fluid end gaskets)

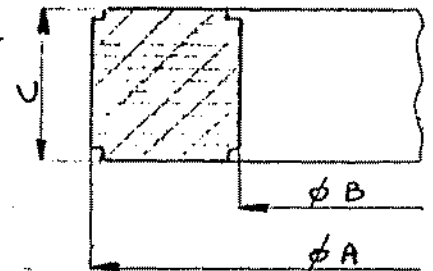
Sezione 1
(section 1)



Sezione 2
(section 2)



Sezione 3
(section 3)



Composizione : tessuto frizionato in gomma resistente agli olii ed al calore
(Compounding : fabric impregnated with oils and heat-resisting rubber)



marca e misura della pompa make and size of pump	tipo type	A	B	C	n° matr. code nr.	
GARDNER DENVER						
FF-FXF 4" x 5"	1	130	111	58		
FG-FXG 4.1/2" x 6"	1	144	124	57		
FG-FXG-P 5" x 6"	1	149,5	136,5	27	4090	
FD-FXX 5" x 8"	1	158,5	139,5	26	468	
FC-FXD 5" x 10"	1	158,5	139,5	26	468	
FXZ 7.1/4" x 12"	1-3	230	204,5	26	3036	
FX-FXK 7.1/4" x 14"	1-3	230	204,5	26	3036	
FQ-FXQ 7.3/4" x 16"	1-3	247,5	222	25,5	3014 b	
FH-FXL-D 8" x 20"	1-3	247,2	222	25,5	3014	
GASO 4.1/2" x 6"	1	145	126,5	2,5	356	
HANIEL LUEG G.P. 120 6.3/4" x 12"	1-3	215	194	25		
HANIEL LUEG G.P. 160						
S 2500 7.1/4" x 16"	1-3	230,2	204,5	26	3036	
S 3000 7.1/4" x 16"	1-3	230,2	204	70	3100	
IDEAL 5" x 10"	1	161,2	142,2	38	4025	
IDEAL C 250 7.1/4" x 15"	1	235	209	51	3037	
IDEAL C 350 7.3/4" x 18"	1	247,5	221,5	51	3031	
IDECO PIGNONE T 440 7.1/4" x 12"	3	242	216	17,5	3026	
IDECO PIGNONE T 880 7.1/2" x 15"	3	249	222	17,5	3744	
IDECO PIGNONE MM 700 7.3/4" x 16"	3	260,3	228,6	19	3044	
IDECO PIGNONE MM 1250 8" x 18"	3	266,5	241	19	3186	
IDECO PIGNONE "D" 7.1/2" x 10"	3	242	216	18	3047	
OIL WELL 3.1/2"x6" - 4"x6"	1	115,5	103	36		
OIL WELL 218 P	1	208	190	7	4164	
WIRTH LK 7.1/4" x 16"	1	234	205	15	3198	
WIRTH LK 7.1/4" x 16"	1-3	234	205	60	3099	
	6					



(cylinder head gaskets)

marca e misura della pompa make and size of pump	tipo type	A	B	C	n° matr. code nr.
GARDNER DENVER					
FF-FXF 4" x 5"	1	146,5	158,5	4	
FG-FXG 4.1/2"x6" - 5"x6"	1	176	164	7	3698
FD-FXX 5" x 8"	1	205	185	10	3022
FC-FXD 5" x 10"	1	202	184	9	
FXZ 7.1/4" x 12"	1-3	262	244	10	
FX-FXK 7.1/4" x 14"	1-3	272	254	10	
FQ-FXQ 7.3/4" x 16"	1-3	327	307	10	
FH-FXL-D 8" x 20"	1-3	321	301	9,5	
GASO					
4.1/2" x 6"	1	165	145	2,5	358
HANIEL LUEG G.P.120 6.3/4" x 12"	2	282	262	10	
HANIEL LUEG G.P.160 7.1/4" x 16"	1-3	316	296	10	
IDEAL 5" x 10"	1	206,5	187,5	9	4022
IDEAL C 250 7.1/4" x 15"	1-3	266	248	10	3041
IDEAL C 350 7.3/4" x 18"	1-3	286	267	9,5	E2250/1
IDECO PIGNONE T 440 7.1/4" x 12"	3	242	216	17,5	3026
IDECO PIGNONE T 880 7.1/2" x 15"	3	249	222	17,5	459
IDECO PIGNONE MM 700 7.3/4" x 16"	3	212,5	200	9,5	3016
IDECO PIGNONE MM 1250 8" x 18"	3	266,5	241	19	3186
IDECO PIGNONE "D" 7.1/2" x 10"	1	266	244	3	4240
MASSARENTI 7.1/4" x 14"	2	282,5	267,5	7,5	3699
OIL WELL 3.1/2"x6" - 4" x 6"	1	138	104	4	
OIL WELL 218 P	1	273	255	7	4242
WIRTH LK 7.1/4" x 16"	2	300	280	10	3196



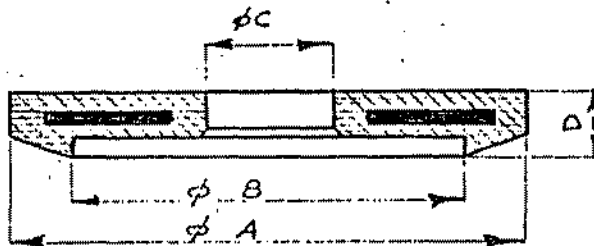
(valve cap gaslets)

marca e misura della pompa make and size of pump		tipo type	A	B	C	n° matr. code nr.
ANSALDO	7.1/4" x 16"	2	194	172	11	4279
BALLERINI B-2	4.1/4" x 5"	1	110	96	4	4098
GARDNER DENVER						
FF-FXF	4" x 5"	1	113,5	101,5	7	
FG-FXG	4.1/2"x6" - 5"x6"	1	132	120	7	3785
FD-FXX	5" x 8"	1	120	108	7	3379
FC-FXD	5" x 10"	1	126	110	8	469
FXZ	7.1/4" x 12"	1-3	193	175	10	
FX-FXK	7.1/4" x 14"	1-3	219	201	10	466
FQ-FXQ	7.3/4" x 16"	1-3	244	217	13	
FH-FXL-D	8" x 20"	1-3	253	234	9,5	
GASO	4.1/2" x 6"	1	127	105	2,5	357
HANIEL LUEG G.P.120	6.3/4" x 12"	2	170	150	10	
HANIEL LUEG G.P.160	7.1/4" x 16"	1-3	198	178	10	
IDEAL	5" x 10"	1	135,6	116,6	9	4023
IDEAL C 250	7.1/4" x 15"	1-3	207	188	10	246
IDEAL C 350	7.3/4" x 18"	1-3	234	214	9,5	E2249/1
IDECO PIGNONE T 440	7.1/4" x 12"	3	189	170	13	3025
IDECO PIGNONE T 880	7.1/2" x 15"	3	208	189	13	446
IDECO PIGNONE MM 700	7.3/4" x 16"	3	206	187,2	9,5	3015
IDECO PIGNONE MM 1250	8" x 18"	3	225	206	10	3185
IDECO PIGNONE "D"	7.1/2" x 10"	1	186,8	167,9	9,5	3190
MASSARENTI	7.1/4" x 14"	2	201,5	186,5	7,5	3660
OIL WELL	3.1/2"x6" - 4"x6"	1	116,5	96	3	
OIL WELL 218 P		1	208	190	7	4164
WIRTH LK	7.1/4" x 16"	2	200	175	11	3197

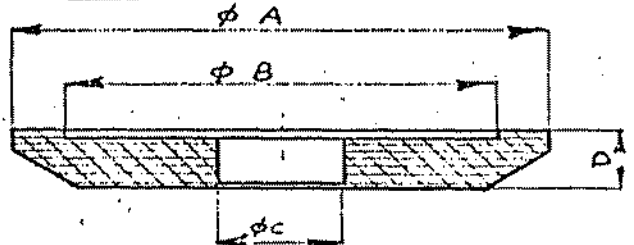
ISOPREN

GUARNIZIONI FUNGO VALVOLA
(valve rubber inserts)

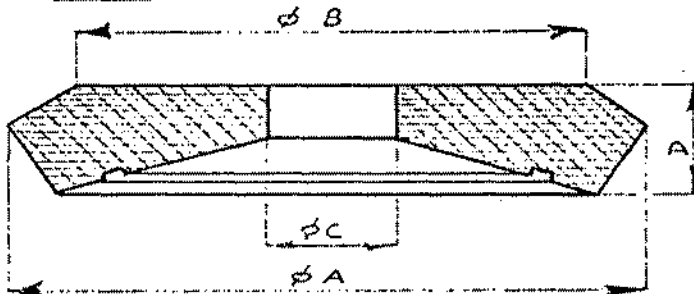
tipo 1 (type 1)



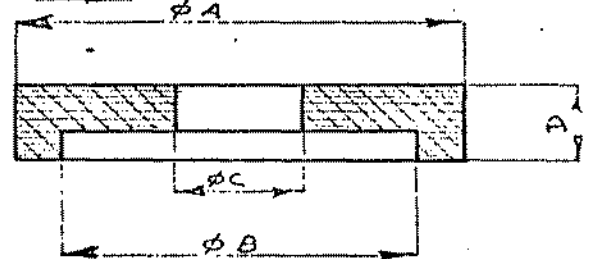
tipo 2 (type 2)



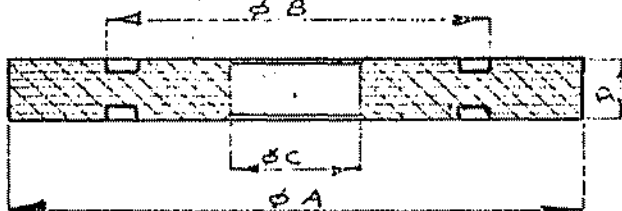
tipo 3 (type 3)



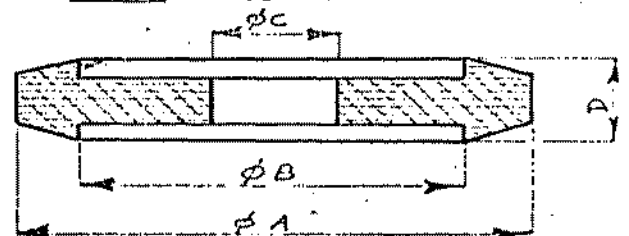
tipo 4 (type 4)



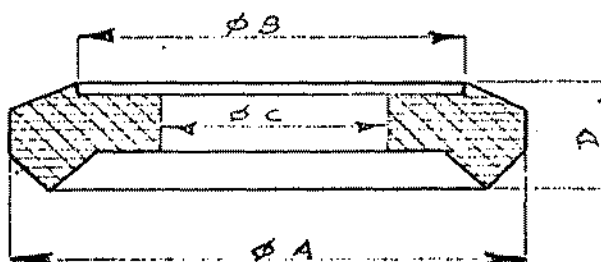
tipo 5 (type 5)



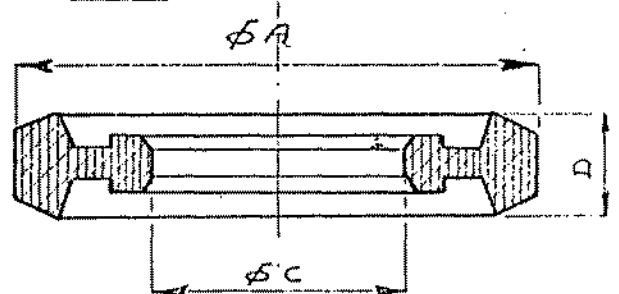
tipo 6 (type 6)



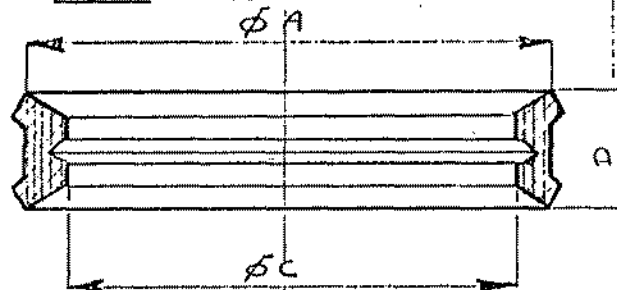
tipo 7 (type 7)



tipo 8 (type 8)



tipo 9 (type 9)





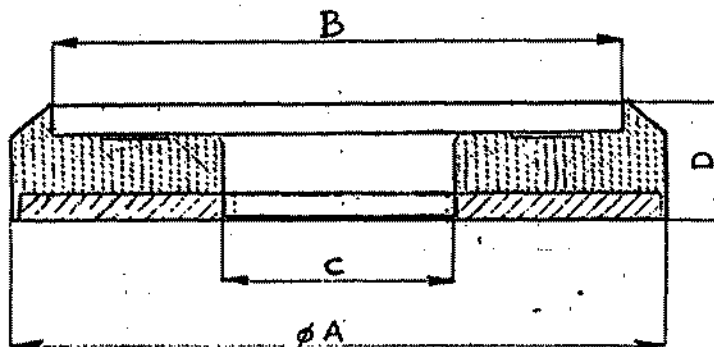
(valve rubber inserts)

guarnizioni inserts	tipo type	A	B	C	D	n° matr. code nr.
Per valvole tipo "GARDNER DENVER" (for "GARDNER DENVER" valves)	1	106,5	93,4	35,5	14,5	4024
	1	149,5	124,5	51	23	
	1	166,5	143	45	23	
	1	167,5	141	51	23	87
	1	171	148	51	23	84
	1	172	148	38,5	19	128
	1	187,5	166	45	23	465
	1	193,5	175,5	67	23	387
	1	205	181	45	23	
Per valvole tipo "SILVER TOP" e "SUPER SERVICE" MISSION (for MISSION valves "SILVER TOP" and "SUPER SERVICE")	2	87,5		38	9,5	3145
	2	120	92	57	15	
	2	157	116	57	19	3116
	2	174	125	57	22	
Per valvole tipo "AMERICAN IRON" (for "AMERICAN IRON" valves)	3	152	135	51	26,5	
	3	161	143	51	26,5	378
Altri tipi (other types)	4	95	86	31	13,5	
	4	97	86	32,5	13	
	4	103	86	32,5	13	471
	4	115	98	45	17	
	5	227	148,5	67	18	
	6	92	80	25,5	17	
	6	170	150	41	28	3148
	7	85	68	28	18	3201
	7	165	140	47,5	27	3068
Per valvole tipo "GARDNER DENVER" 5" x 8"	8	100,5		49	21	101
Per valvole "QUEEN VALVE tipo B"	9	98		85	15,5	3172
	9	171		146	29	

ISOPREN

GUARNIZIONI VALVOLA IN POLIURETANO

(Poliurethane valve inserts)

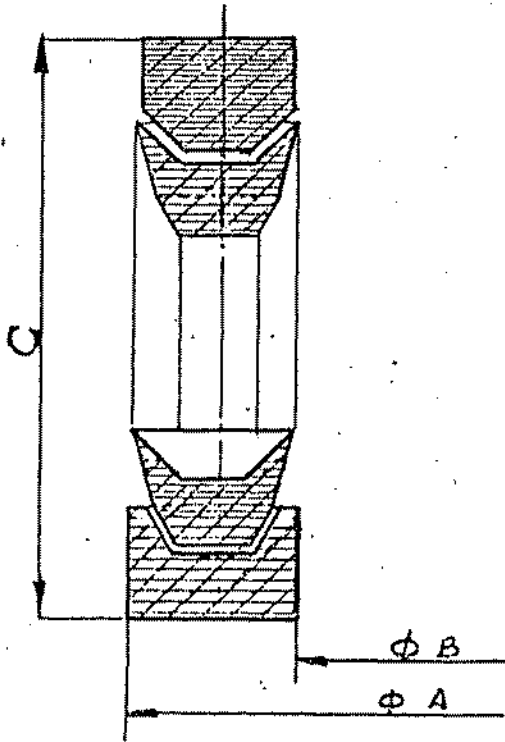


marca e misura della pompa make and size of pump	A	B	C	D	n° matr. code nr.	
NATIONAL 10.P.130"	140	123,5	50	19	1760	
NATIONAL 1600	174,5	156,7	55,6	25	1724	

ISOPREN

GUARNIZIONI PREMISTOPPA STELO

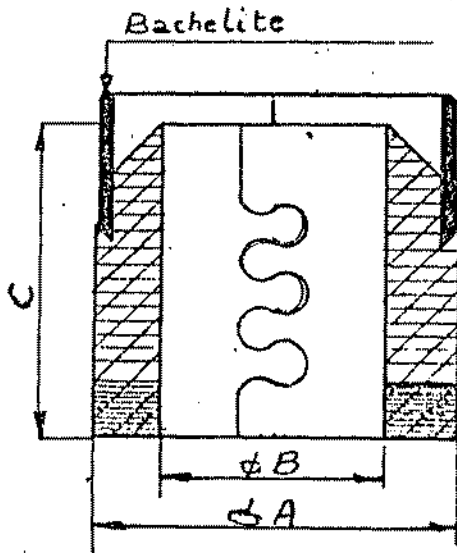
(fluid rod packing)



tipo 1 (type 1)

Composizione : anelli in tela frizionata con gomma resistente all'olio ed al calore

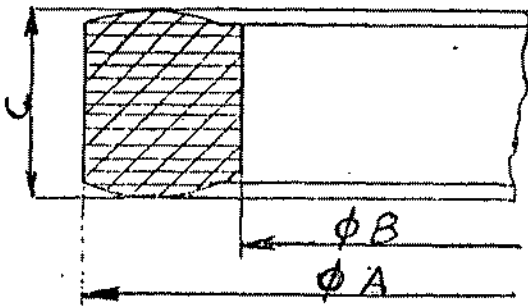
(Compounding : duck and oils heat-resisting rubber)



tipo 2 (type 2)

Composizione : gomma resistente all'olio ed al calore

(Compounding : oils and heat-resisting rubber)



tipo 3 (type 3)

Composizione : gomma resistente all'olio ed al calore

(Compounding : oils and heat-resisting rubber)



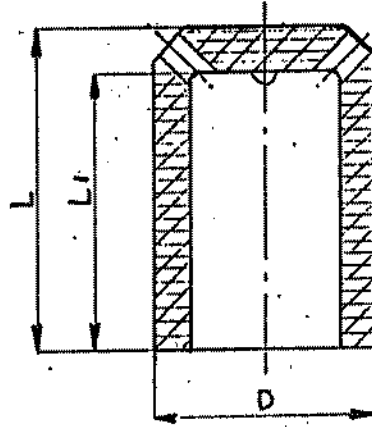
(fluid rod packing)

marca e misura della pompa make and size of pump		tipo type	A	B	C	n° anelli nr. rings	n° matr. code nr.
EMSCO D-300		2	89	50,8	84		3128
GARDNER DENVER							
FC-FXG	4.1/2" x 6"	3	46	25,5	7,2	6	3594
FC-FXG	5" x 6"	3	46	25,5	7,2	6	3594
FD-FXX	5" x 8"	3	63,5	38,1	8	9	3189
FC-FXD	5" x 10"	3	63,5	38,1	8	9	3189
FXZ	7.1/4" x 12"	1	82,5	50,8	74	11	
FX-FXK	7.1/4" x 14"	2	82	50,8	72		3136
FQ-FXQ	7.3/4" x 16"	3	82,5	50,8	22	1	
FH-FXL-D	8" x 20"	1	94,5	63,5	75	11	
FH-FXL-D	8" x 20"	2	94	63,5	81		
GASO	4.1/2" x 6"	3	47,5	28,5	5,7	4	3694
GASO	4.1/2" x 6"	3	41	28,5	8	3	
HANIEL LUEG G.P.120	6.3/4" x 12"	1	82,5	50,8	79		
HANIEL LUEG G.P.160	7.1/4" x 16"	2	82	50,8	72		3136
		3	82,5	50,8	22		
IDEAL C.250	7.1/4" x 15"	1	95	57,2	84	11	
		2	95	57,2	70		3034
IDEAL C.350	7.3/4" x 18"	1	98	60,3	72	10	
		2	98	60,3	85		3727
IDECO PIGNONE T. 440	7.1/4" x 12"	1	89	57,2	100	11	
		2	89	57,2	106,5		
IDECO PIGNONE T. 880	7.1/2" x 15"	1	102	63,5	100	11	
		2	102	63,5	89		3103
IDECO PIGNONE MM 700	7.3/4" x 16"	2	108	69,8	96,5		E2248/1
IDECO PIGNONE MM 1250	8" x 18"	2	117,5	79,5	105		3149
OIL WELL	7.1/4" x 18"	3	95	56	19		3714
WIRTH LK	7.1/4" x 16"	1	98	60,3	100	10	
		2	97,5	60,3	84,5		

ISOPREN

GUARNIZIONI GUIDA VALVOLA

(guide valve gasket)

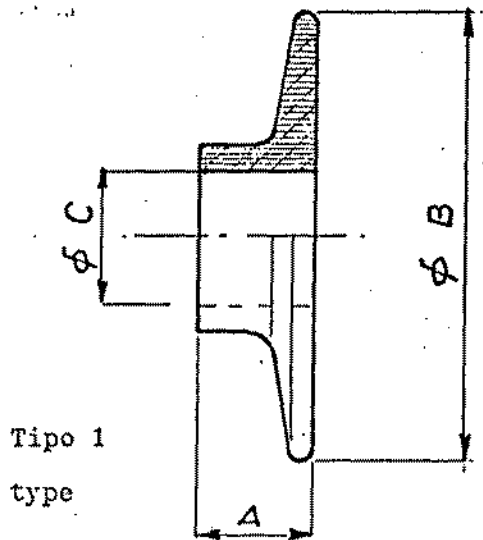


descrizione description	D	L	L ₁	matr. n° code nr.
IDECO PIGNONE				
7.1/4" x 12" T 440	44,5	52,5	42,5	3192
7.1/2" x 15" T 880	44,5	46	36	3192
7.3/4" x 16" MM 700	47,5	69,5	53,5	3504
8" x 18" MM1250				
PIGNONE				
7.1/2" x 10" D	47,5	63,5	53,5	3504

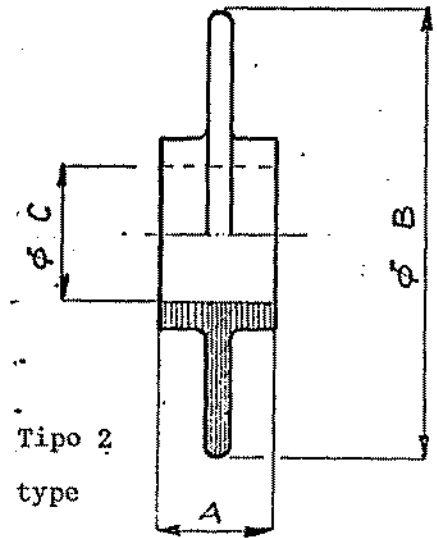
ISOPREN

DISCHI PARA FANGO

(rubber mud guard)



Tipo 1
type



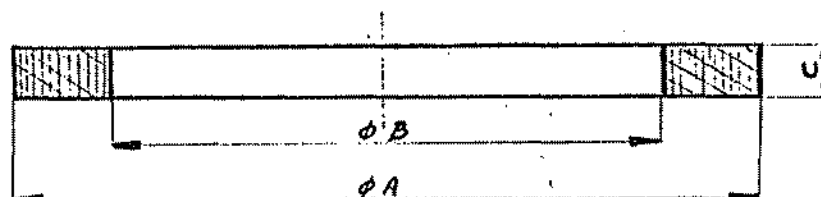
Tipo 2
type

marca e misura della pompa make and size of pump	tipo type	A	B	C	n° matr. code nr.
GARDNER DENVER					
FG-FXG 4.1/2"x6"-5"x 6"	2	31	130	25	3064
FD-FXX /FC-FXD 5" x8"-5"x10"	2	31	130	38	3064
FXZ 7.1/4" x 12"	1	30,5	254	77,5	
HANIEL LUEG GP 120 6.3/4" x 12"	1	33	200	50,8	
HANIEL LUEG GP 160 7.1/4" x 16"	1	33	200	50,8	
IDECO PIGNONE T 440 7.1/4" x 12"	1	38	310	86	223
IDECO PIGNONE D 7.1/2" x 10"	1	30	130	38	4093
IDECO PIGNONE T 880 7.1/2" x 15"	1	38	380	98	
IDECO PIGNONE MM 700 7.3/4" x 16"	1	60	360	108	3184
IDECO PIGNONE MM1250 8" x 18"	1	60	360	125,5	3184

ISOPREN

GUARNIZIONE TUBO GUAINA

(gasket)

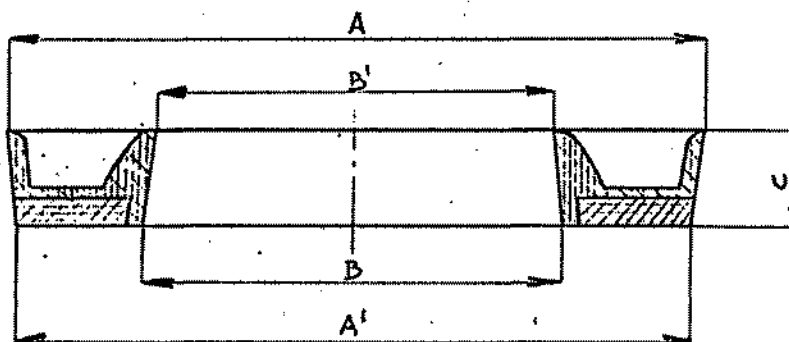


descrizione description	A	B	C	n° matr. code nr.	
GUARNIZ. TESTE INIEZ. TSS.300 - TSS.250	146,8	92	12,7	3585	

ISOPREN

GUARNIZIONE AD " U " TUBO GUAINA

(" U " gasket)

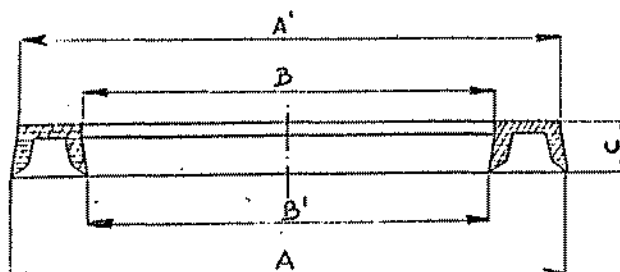


descrizione description	A ¹	A	B ¹	B	C	matr. n° code nr.
GUARNIZ. TESTE INIEZ. TSS.300 e TSS.250	145,3	149,5	85,2	90,5	20,6	3586

ISOPREN

GUARNIZIONE PREMISTOPPA TUBO GUAINA

(rod gland gasket)

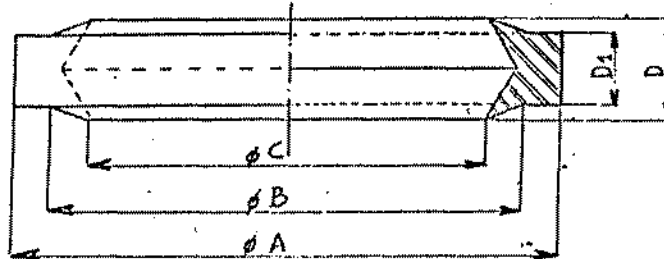


descrizione description	A	A ¹	B	B ¹	C	matr. n° code nr.
GUARNIZ. TESTE INIEZ. TSS.250 - TSS.300	119,5	117	89,5	88,65	11,1	3225

ISOPREN

ANELLO DI TENUTA

(gasket)

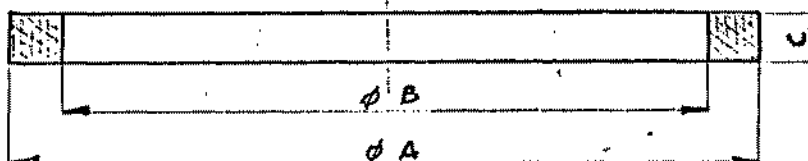


descrizione description	A	B	C	D	D ¹	matr. n° code nr.	
ANELLO DI TENUTA TESTA INIEZ. WESTERN	60	52	43	12	9	3062	

ISOPREN

GUARNIZIONI GIUNTI BASSA PRESSIONE

(low pressure joints rubber inserts)

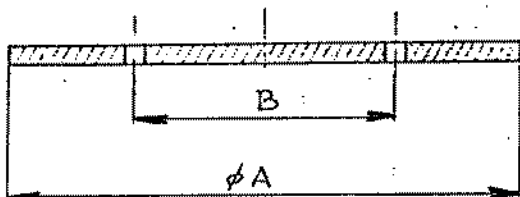


descrizione description	A	B	C	matr. n° code nr.
ANELLO DI TENUTA				
∅ 8"	270	230	20	3754
∅ 10"	325	280	20	3129
∅ 12"	380	330	20	3130

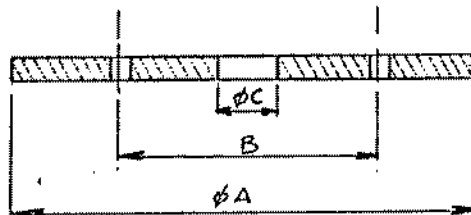
ISOPREN

VALVOLE A TAMPONE
(rubber valves inserts)

GUARNIZIONE UNA VIA



GUARNIZIONE DUE VIE



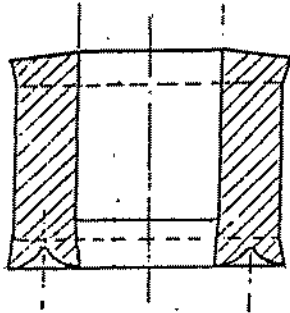
descrizione description	A	B	C	matr. n° code nr.
GUARNIZIONI UNA VIA				
8"	224	140		3131
10" h. 300)	280	140		3131
10" h. 600)				
12" h. 300	330	160		3845
GUARNIZIONI DUE VIE				
10" 3 attacchi	261	140	32,5	3131

ISOPREN

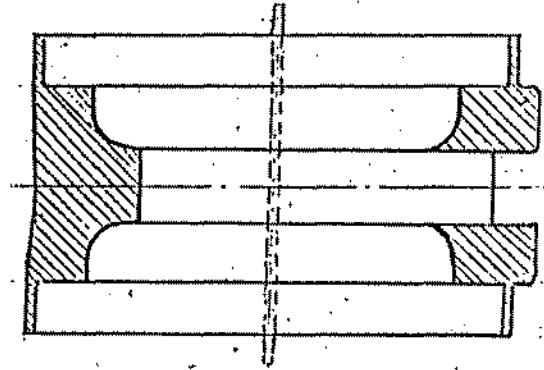
GUARNIZIONI PER VALVOLE FANGO
" FLEX-SEAL " CAMERON

(rubber inserts for "Flex-Seal"
mud valve Cameron)

STELO



PARATOIE



descrizione description	misura size	n° matricola code number	
GUARNIZIONI STELO stem packing	2" 2000 lbs.	413	
	3" 2000 lbs.	417	
	4" 2000 lbs.	421	
	2" 3000 lbs.	415	
	3" 3000 lbs.	419	
	4" 3000 lbs.	423	
GUARNIZIONI PARATOIE gate packing	2" 2000 lbs.	414	
	3" 2000 lbs.	418	
	4 2000 lbs.	422	
	2" 3000 lbs.	416	
	3" 3000 lbs.	420	
	4" 3000 lbs.	424	

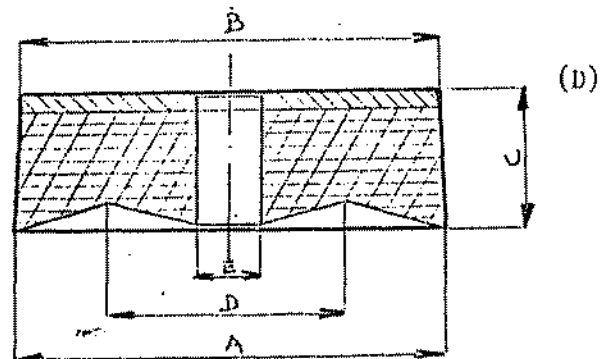
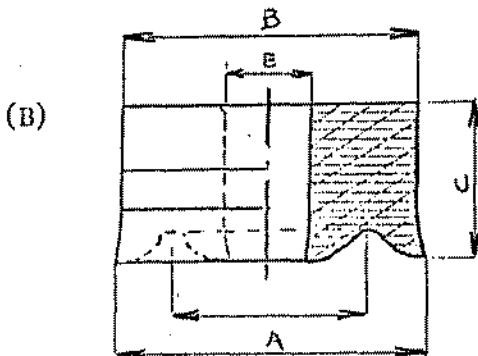
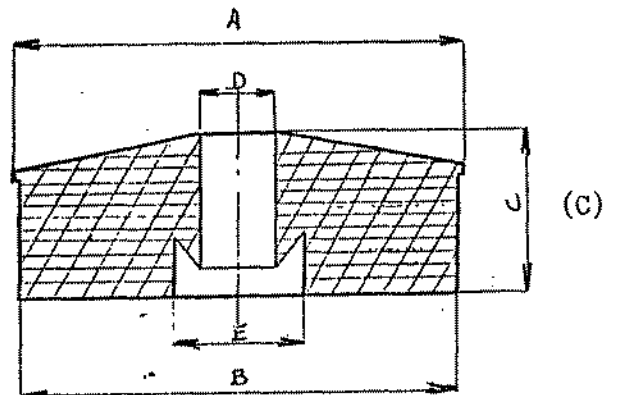
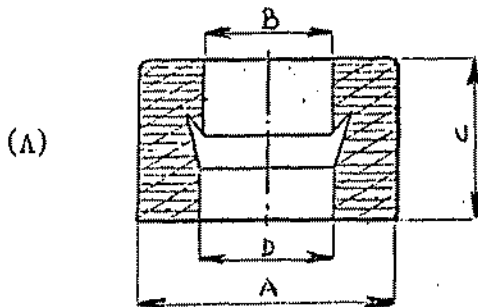
ISOPREN

VALVOLE DI SICUREZZA

(security valves)

VALVOLE ϕ 2" API

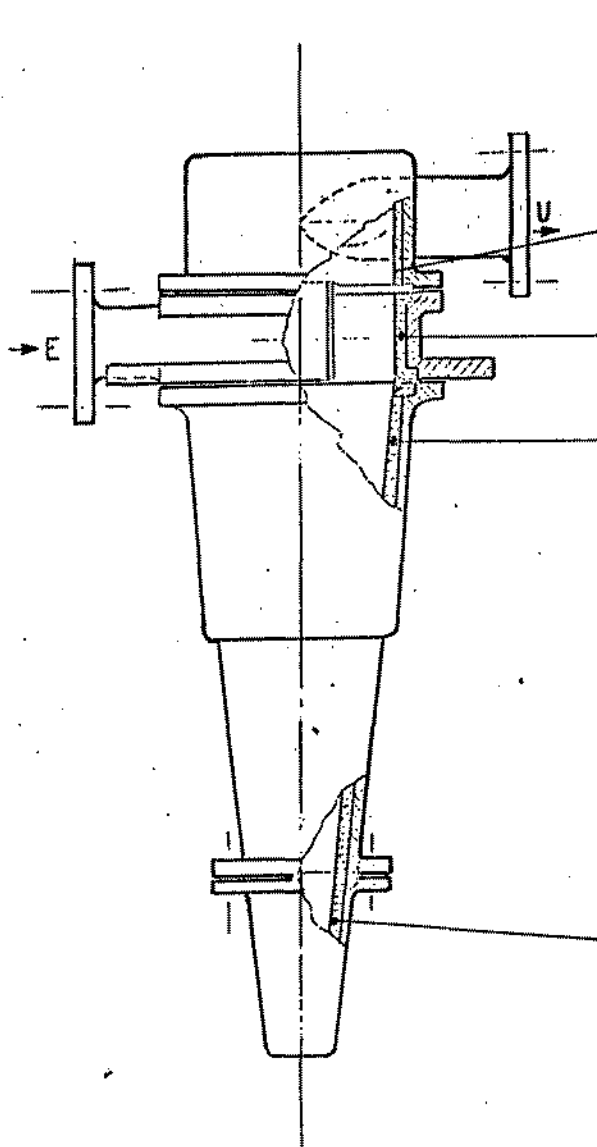
VALVOLE ϕ 4" API



descrizione description	A	B	C	D	E	matr. n° code nr.
VALVOLE ϕ 2" API						
(A) AMMORTIZZATORE PISTONCINO	40	20	25	20,5		3050 +
(B) PISTONCINO	47	45,5	24	30	13	3049
VALVOLE ϕ 4" API						
(C) GUARNIZIONE SUPER.	97	95,1	35	16	28	3158
(D) GUARNIZIONE INFER.	90,2	89	30	50	14	3159

RIVESTIMENTI INTERCAMBIABILI

(interchangeable rubber liners)

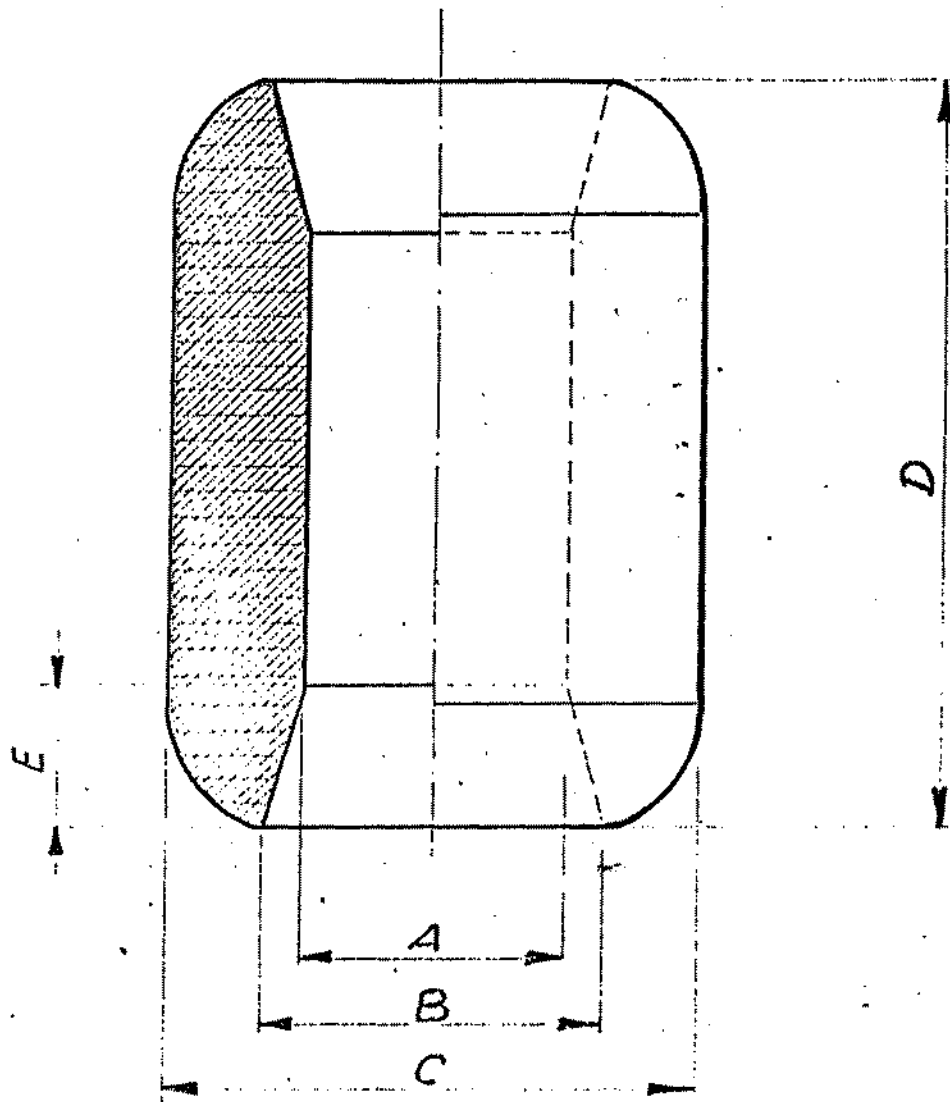


Pos. pos.	descrizione description	matr.n° code nr.	
6	GUARNIZIONE CAPPELLO	3052	
7	GUARNIZIONE CORPO INTERMEDIO	3053	
8	GUARNIZIONE IMBUTO	3054	
	GUARNIZIONE UGELLO		
15	∅ 10	3051	
16	∅ 20	3051	
17	∅ 25	3051	

ISOPREN

PROTETTORE CHIUSO
PER ASTE DI PERFORAZIONE

(casing protectors)

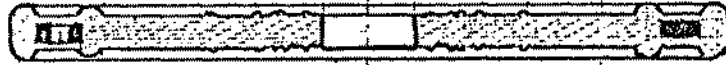


tipo type	A	B	C	D	E	matr. n° code nr.	
3.1/2" x 5.1/8"	54	70	108	192	37,5	3528	
5" x 7.1/2"	75	96	155	204	43	3310	

ISOPREN

DISCHI TERGIASTE MULTIPLI

(pipe wipers)



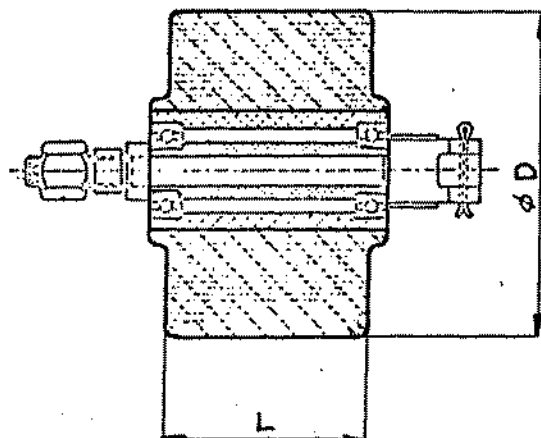
Ø e. disco o.d. wiper	Ø e. asta o.d. pipe	matr. n° code nr.	
17"	2.3/8 - 6.5/8	3013	

ISOPREN

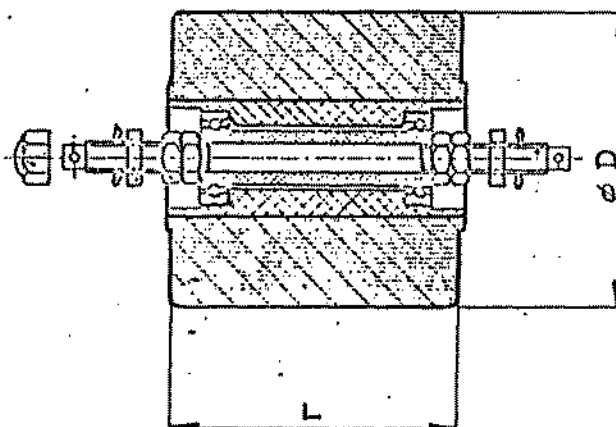
RULLI GUIDACORDA
completi di cuscinetti

(rolls guide)

tipo " BY " type



tipo " TH " type



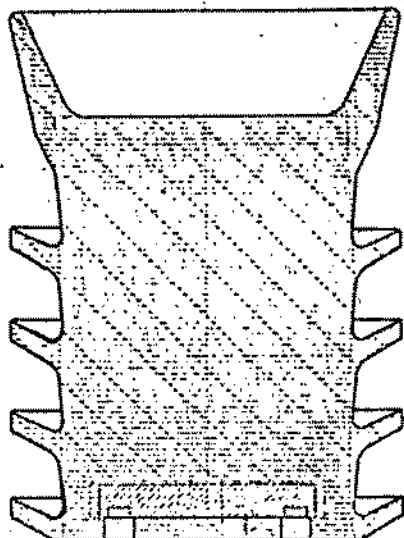
descrizione description	D	L	matr. n° code nr.	
Tipo " BY " BYRON JACKSON	103,2	139,7	3226	
Tipo " TH " THERMOID	127	126	3275	

ISOPREN

TAPPI DI CEMENTAZIONE
(cementing rubber plugs)

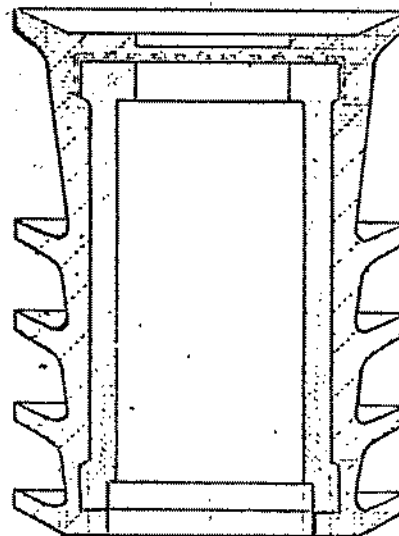
SUPERIORE

(top)



INFERIORE

(bottom)



descrizione description	misura size	matricola code nr.	
SUPERIORE	5"	307	
INFERIORE	5"	308	
SUPERIORE	9.5/8"	296	
INFERIORE	9.5/8"	295	
SUPERIORE	13.3/8"	409	
INFERIORE	13.3/8"	410	